



 **MATRIX**

MVI-330S / MVI-460S

SANITARY PACKAGING MACHINE

F&T

**FLEXIBLES
& TRAYS**



MVI-330S / MVI-460S

SANITARY PACKAGING MACHINE

Available in Two Sizes, the Matrix MVI-330S and the MVI-460S offers a Sanitary Design Enhancing Hygiene for Packaging Solutions.

Crafted from 95% stainless steel, the Matrix MVI-330S and MVI-460S deliver the same reliable performance as our standard MVI-330 / MVI-460, only more hygienic. Designed for washdown environments, it features sanitary-grade fasteners, bearings, shafts, and shafts.

With polished, ground welds free of cracks and pits, along with stud-weld tie hooks and a welded drip pan, these models offer a comprehensive sanitary design ensuring worry-free operation for your team in even the most hygiene-sensitive applications.



The Matrix MVI-330S and MVI-460S—your go-to solution for flexible, high-speed bagging. Designed with versatility in mind, these machines easily switch between different bag sizes and styles, all while maintaining top-tier sanitation standards. Whether you're packing snacks, produce, or more, the MVI series keeps your operation efficient and compliant.

FEATURES & BENEFITS

- Made in the USA
- Open Channel stainless steel frame, including guarding and adjustable mounting feet, back stand, doors, panels, and load shelf
- Stainless steel sloped and pivoting NEMA 4X electrical enclosure
- Automatic film tracking, registered film sensor, and print registration roller
- Unwind film spindle and film tension adjustment
- Allen Bradley PLC with 10" color touch screen
- Beckhoff servo motors for film pull and jaw motion control (IP65)
- Integrated welded drip pan and wire hooks
- Quick change T-slot jaw faces

OPTIONS

- Mechanical or heated hole punch
- Flat bottom and gusset/tucker attachment
- Printer, labeler, valve applicators
- Digital gas flush
- Load shelf (for heavier bags)
- UL electrical system (built and certified in-house)
- Vacuum belts
- Product stager
- Power unwind (standard with MVI-460S)
- AB Compact logix controller with AB servo motors
- Ultra sonic edge guide sensor
- Independently actuated seal platens for poly film



PILLOW BAG



GUSSET BAG



FLAT BOTTOM BAG

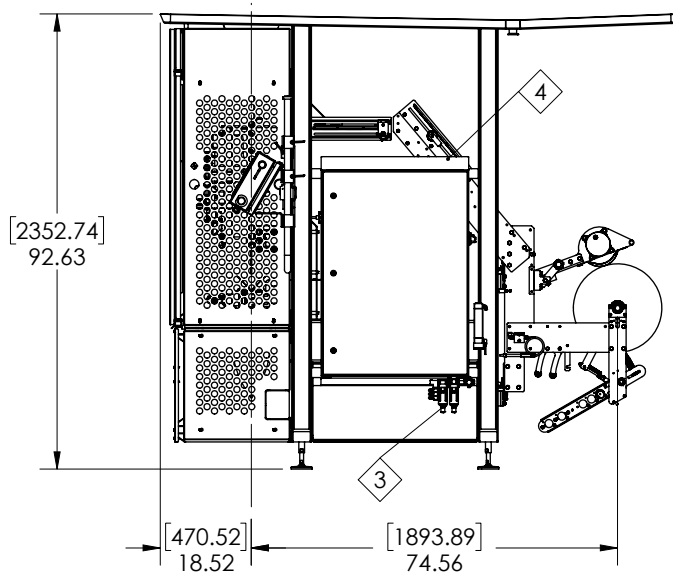
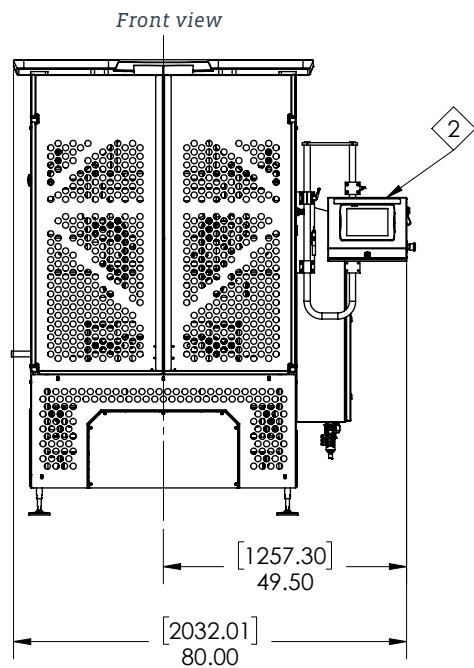
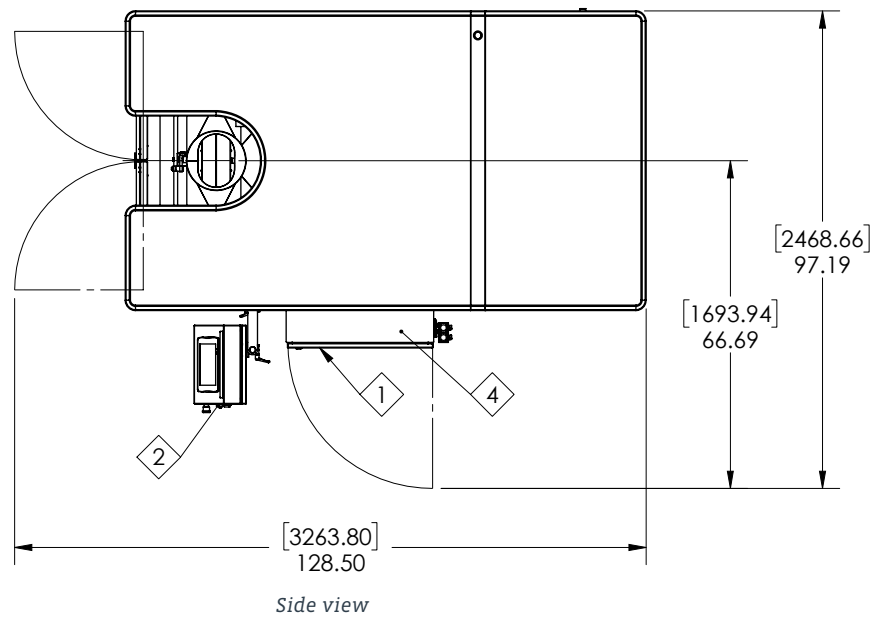


MODIFIED DOYPOUCH FILM WITH STAND-UP POUCH SYSTEM OPTION, (available with or without zipper)



CONFIGURATION

- LEGEND**
- 1 MAIN ELECTRICAL ENCLOSURE
 - 2 HMI
 - 3 AIR INLET
 - 4 POWER DROP



TYPICAL PRODUCT SPECIFICATIONS

Cycle Speed	Up to 100 BPM	
Electrical	208-240 VAC (+/- 5%) 30 AMP Single phase, 50/60 Hz	
Air Pressure	3-10 CFM @ 80 PSIG (demand varies by application)	
Bag Size	Width	Length
Minimum	3" (76 mm) pillow	3" (76 mm) pillow
Maximum	13" (330 mm) MVI-330S 18" (457 mm) MVI-460S	15" (381)* MVI-330S 20" (508 mm)* MVI-460S

Film Roll (Std)	14" diameter (MVI-330S) 18" diameter (MVI-460S)
Film	Laminate or poly film sealing capability
Filler	Compatible with all types

*Longer bags possible with double pull feature.
We reserve the right to introduce technical modifications without notice.



Matrix is a leading manufacturer of reliable, cost-effective, and easy-to-use vertical form fill seal (VFFS) machines designed for a wide range of flexible packaging applications. As part of ProMach's Flexibles & Trays business line, Matrix enhances its portfolio by partnering with Bartelt and FLtècnics for horizontal form fill seal (HFFS) and cartoning solutions. Bartelt, a trusted manufacturer of pouching, cartoning, and packing solutions, also serves as the master distributor for FLtècnics' rollstock and pre-made pouch machines. Together these brands highlight its innovation in automated packaging, delivering dependable, long-lasting solutions for food and non-food industries.

In addition, Matrix is the master distributor of INVpack stickpack and sachet systems and Pacraft pre-made pouch machines, offering tailored, high-efficiency packaging systems to meet the diverse needs of customers worldwide. Backed by ProMach, a global leader in packaging solutions, Matrix and Bartelt are dedicated to optimizing performance, protecting brands, and fostering trust across the packaging supply chain. Discover more about Matrix at www.MatrixPM.com and ProMach at www.ProMachBuilt.com.

2395 Dakota Dr.

Grafton, WI 53024

P: 262-268-8300

TOLL FREE: 888-Matrix1

E: Matrix@ProMachBuilt.com

MatrixPM.com

