



MATRIX

MVI-330 / MVI-460

VERTICAL FORM/FILL/SEAL

F&T

**FLEXIBLES
& TRAYS**



MVI-330 / MVI-460

VERTICAL FORM/FILL/SEAL

Available in Two Sizes, the Matrix MVI-330 / MVI-460 is the Ideal Solution for Customers Seeking Reliability

The Matrix MVI-330 / MVI-460 are high-performance, fully configurable bagging solutions designed for customers who need consistent reliability. Built with a rugged, stainless-steel frame construction, these machines offer exceptional repeatability and value. Features like automatic film tracking and customizable options ensure flexibility for a wide range of packaging needs.

Capable of producing various bag sizes and styles—including pillow, gusset, and flat bottom—the MVI-330 / MVI-460 can reach speeds of up to 100 bags per minute (bpm). With multiple machine versions available, you can select the model that best fits your production requirements.



High performance MVI-330 / MVI-460 machines effectively produce multiple bag types and sizes on a single machine.

FEATURES & BENEFITS

- Made in the USA
- Stainless steel frame and NEMA 4X electrical enclosure
- Registered film sensor, print registration roller and automatic film tracking
- Allen Bradley MicroLogix PLC with 10" color touch screen
- Beckhoff servo motors for film pull and jaw motion
- Larger bag, high performance at a reasonable cost
- Quick change T-slot jaw faces
- Laminate or poly film sealing capability
- Full compatibility with all types of fillers
- Washdown construction

OPTIONS

- Rotated jaw (for 3-sided seal)
- Washdown or sanitary construction
- Gusset and flat bottom bag attachments
- Edge or center back seal (adjustable back seal)
- Mechanical or heated hole punch
- Button or flex-style coffee valve applicators
- Digital Gas flush
- Ultra sonic edge guide sensor
- Vacuum belts
- Power Unwind
- AB Compact Logix controller with AB servo motors
- Independently actuated seal platens for poly film

BAG STYLES



PILLOW BAG



GUSSET BAG



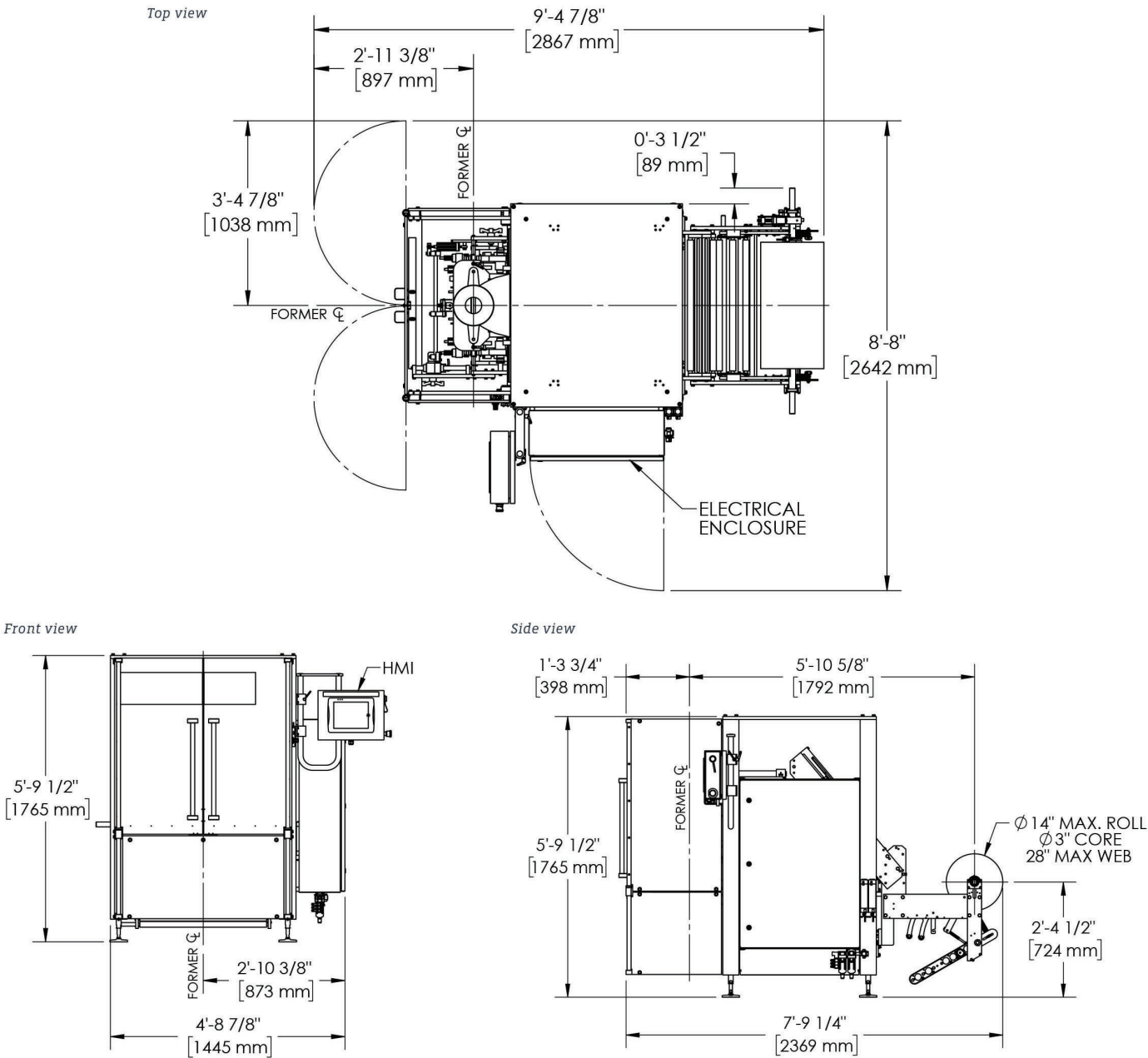
FLAT BOTTOM BAG



MODIFIED DOYPOUCH FILM WITH STAND-UP POUCH SYSTEM OPTION, (available with or without zipper)



CONFIGURATION



TYPICAL PRODUCT SPECIFICATIONS

Cycle Speed	Up to 100 BPM		Bag Sizes	Width	Length
Electrical	230V (+/- 5%) 30 AMP Single phase, 50/60 Hz		Minimum	3" (76 mm)	3" (76 mm)*
Air Pressure	3-12 CFM @ 80 PSIG (demand varies by application)		Maximum	13" (330 mm) MVI-330 18" (457 mm) MVI-460	15" (381 mm) MVI-330 23" (584 mm)* MVI-460
Bag Sizes	Width	Length	Film Roll (Std)	N/A	
Filler	Compatible with all types		Film	Laminate or poly film sealing capability	

*Longer bags possible with double pull feature or extended vertical seal.



Matrix is a leading manufacturer of reliable, cost-effective, and easy-to-use vertical form fill seal (VFFS) machines designed for a wide range of flexible packaging applications. As part of ProMach's Flexibles & Trays business line, Matrix enhances its portfolio by partnering with Bartelt and FLtècnics for horizontal form fill seal (HFFS) and cartoning solutions. Bartelt, a trusted manufacturer of pouching, cartoning, and packing solutions, also serves as the master distributor for FLtècnics' rollstock and pre-made pouch machines. Together these brands highlight its innovation in automated packaging, delivering dependable, long-lasting solutions for food and non-food industries.

In addition, Matrix is the master distributor of INVpack stickpack and sachet systems and Pacraft pre-made pouch machines, offering tailored, high-efficiency packaging systems to meet the diverse needs of customers worldwide. Backed by ProMach, a global leader in packaging solutions, Matrix and Bartelt are dedicated to optimizing performance, protecting brands, and fostering trust across the packaging supply chain. Discover more about Matrix at www.MatrixPM.com and ProMach at www.ProMachBuilt.com.

2395 Dakota Dr.

Grafton, WI 53024

P: 262-268-8300

TOLL FREE: 888-Matrix1

E: Matrix@ProMachBuilt.com

MatrixPM.com

