



MATRIX

MVC-400

VERTICAL FORM/FILL/SEAL

F&T

**FLEXIBLES
& TRAYS**



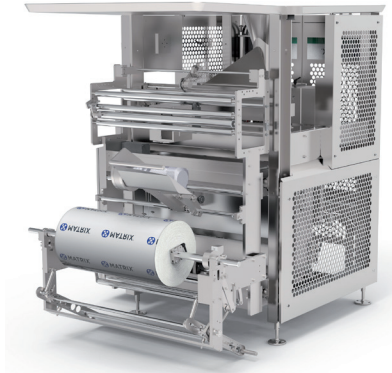
MVC-400

VERTICAL FORM/FILL/SEAL

Servo-Driven Continuous Box-Motion offers Exceptional Performance to Create the Larger Bags You Need.

The Matrix MVC-400 is a servo-driven continuous box-motion bagger. Providing cutting-edge technology with a high-speed jaw system that allows for maximum dwell time on sealing, delivering faster speeds and accuracy.

The AutoPro™ Servo Adjustment System cuts changeover time by at least 50%. Adjustments are archived as recipes and the settings are replicated on command. Runs films that require longer seal times making it ideal for markets such as, frozen, fresh cut and IQF (Individually Quick Frozen) products.



The Matrix MVC-400 offers an extremely versatile machine, creating multiple of bag sizes, by simply entering the recipe!

FEATURES & BENEFITS

- Made in the USA
- Open channel stainless steel 3 NEMA 4X electrical enclosure, 304 frame grounded & polished "sanitary" and adjustable mounting feet or optional casters
- Servo-driven continuous box-motion jaw for maximum speed and jaw dwell time
- Recipe based AutoPro™ with Beckhoff Servo Adjustment System for size change
- High performance vacuum film pull-belts (improves performance with difficult films)
- Slanted and pivoting electrical cabinet
- Integrated drip pan
- 12" multi-touch HMI with 800 x 600 screen resolution
- Electronic film registration mark, pneumatic film roll brake, automatic ultra sonic film tracking
- Comprehensive self-diagnostic tools
- Cloud based wireless remote diagnostics

OPTIONS

- Mechanical or heated hole punch
- Thermal transfer printer with integrated signal encoder
- Independent seal platens for poly film
- Digital gas flush
- Side gusset (top and bottom)
- Load shelf (intermittent)
- UL 508A (built and certified in-house)
- Power unwind
- Flat bottom bags

BAG STYLES



PILLOW BAG

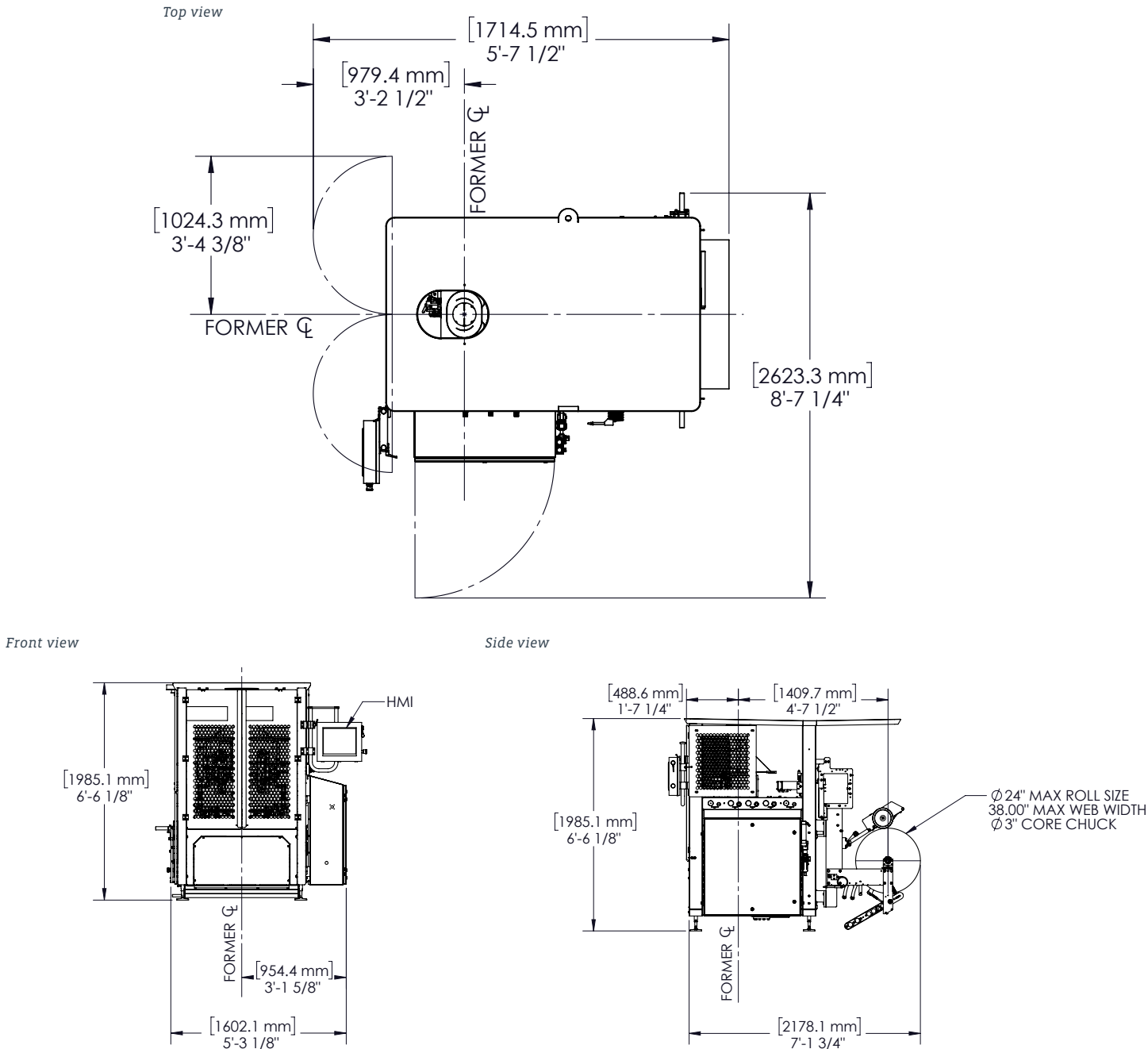


GUSSET BAG



FLAT BOTTOM BAG

CONFIGURATION



TYPICAL PRODUCT SPECIFICATIONS

Cycle Speed	Up to 200 BPM (depending on application)		Film Roll (Std)	14" diameter
Electrical	230V (+/- 5%), 30 AMP, 3PH, 50/60 Hz		Film	Laminate or poly film sealing capability
Air Pressure	10 CFM @ 80 PSIG (+/-20%) (demand varies by application)		Filler	Compatible with all types
Bag Size	Width	Length		
Minimum	2.75" (70 mm)	3" (76 mm)		
Maximum	15" (305 mm)	25" (635 mm)		



Matrix is an industry leading manufacturer of rugged, cost competitive, and easy-to-operate vertical form fill & seal (VFFS) equipment for all types of flexible packaging and operates as a master distributor for INVpack offering stickpack and sachet machines, and Pacraft offering pre-made pouch packaging machines. Experienced in many flexible packaging applications, Matrix has the ability and knowledge to tailor highly efficient and sensible packaging systems and is committed to optimizing solutions for customers on a global scale. Matrix is a product brand of ProMach, a global leader in packaging line solutions. As part of the ProMach Flexibles & Trays business line, Matrix helps our packaging customers protect and grow the reputation and trust of their consumers. ProMach is performance, and the proof is in every package. Learn more about Matrix at www.MatrixPM.com and more about ProMach at www.ProMachBuilt.com.

2395 Dakota Dr.

Grafton, WI 53024

P: 262-268-8300

TOLL FREE: 888-Matrix1

E: Matrix@ProMachBuilt.com

MatrixPM.com