



 **MATRIX**

MVC-250

VERTICAL FORM/FILL/SEAL

F&T

**FLEXIBLES
& TRAYS**



MVC-250

VERTICAL FORM/FILL/SEAL

Compact Continuous Motion VFFS: High-Speed Performance, Future-Ready Technology

This compact, only 62" in height VFFS machine by Matrix is engineered to excel on the busiest production floors. Choose between advanced Beckhoff or Allen-Bradley control systems—both designed for rapid processing, user-friendly operation, and endless possibilities for future upgrades. With the MVC-250, you stay ahead of the competition.

Its high-speed versatility and ability to handle films requiring longer seal times make it ideal for packaging applications in snacks, frozen foods, fresh produce, IQF, cheese, and more. Take advantage of remote diagnostic and connectivity control for seamless troubleshooting, training, and maintenance—without compromising your facility's firewall.



Compact, at only 62" tall, the MVC-250 offers advanced control, high-speed versatility, and remote connectivity for maximum efficiency.

FEATURES & BENEFITS

- Standard C-Channel Frame for washdown applications, stainless steel 304 frame polished and ground (corrosion resistant), NEMA 4X electrical enclosure, and adjustable mounting feet or optional caster
- Autoset Servo Adjustment System for pull belts
- Intuitive HMI's are designed for ease of use, making it simple to operate the machine
- Pivoting electrical cabinet for easy maintenance
- Regular edge guide controller, made easy with recipes saved for quick reference
- Compatible with thermal transfer printers or labelers, such as ID Technology
- Servo-driven continuous box-motion jaw for maximum speed and optimal jaw dwell time
- High performance vacuum film pull belts
- Comprehensive self-diagnostic tools-with safe remote access for seamless diagnostics, training, maintenance, and more!

OPTIONS

- Mechanical or heated hole punch
- Thermal transfer printer with integrated signal encoder no printer specific encoder required
- Independently actuated seal platens for poly film
- Digital gas flush
- UL 508A (built and certified in-house)
- Washdown
- Anti-static
- Full width spindle

BAG STYLES



PILLOW BAG



GUSSET BAG



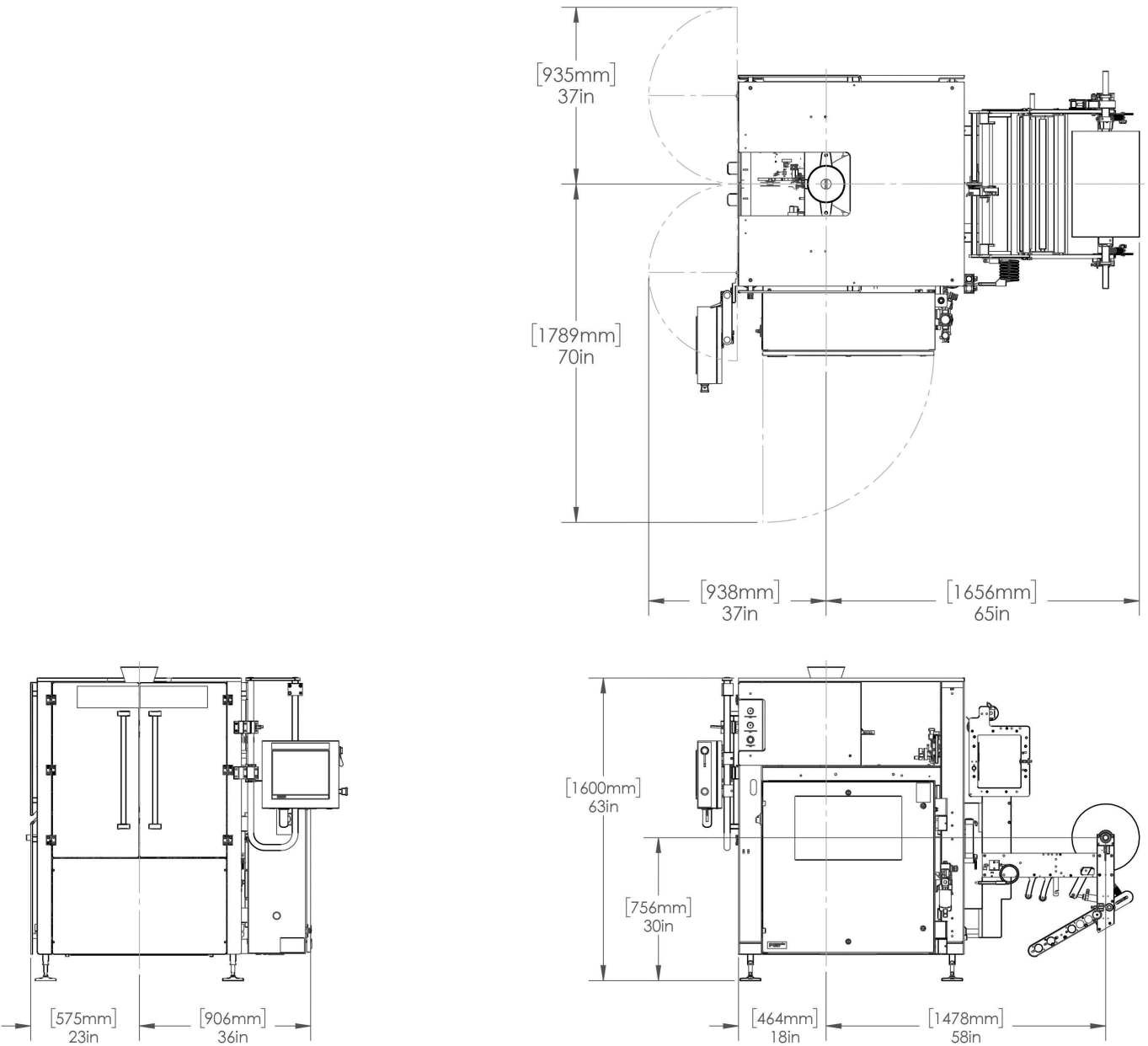
FLAT BOTTOM BAG



MODIFIED DOY POUCH FILM WITH STAND-UP POUCH SYSTEM OPTION, (available with or without zipper)



CONFIGURATION



TYPICAL PRODUCT SPECIFICATIONS

Cycle Speed	Up to 200 BPM	
Electrical	230V (+/- 5%), 30 AMP, 3PH, 50/60 Hz	
Air Pressure	10 CFM @ 80 PSIG (+/-20%) (demand varies by application)	
Bag Size	Width	Length
Minimum	2.75" (70 mm)	3" (76 mm)
Maximum	10" (254 mm)	12" (305 mm)

Film Roll	14" diameter (Recommended)
Film	Laminate or poly film sealing capability
Filler	Compatible with all types



Matrix is a leading manufacturer of reliable, cost-effective, and easy-to-use vertical form fill seal (VFFS) machines designed for a wide range of flexible packaging applications. As part of ProMach's Flexibles & Trays business line, Matrix enhances its portfolio by partnering with Bartelt and FLtècnics for horizontal form fill seal (HFFS) and cartoning solutions. Bartelt, a trusted manufacturer of pouching, cartoning, and packing solutions, also serves as the master distributor for FLtècnics' rollstock and pre-made pouch machines. Together these brands highlight its innovation in automated packaging, delivering dependable, long-lasting solutions for food and non-food industries.

In addition, Matrix is the master distributor of INVpack stickpack and sachet systems and Pacraft pre-made pouch machines, offering tailored, high-efficiency packaging systems to meet the diverse needs of customers worldwide. Backed by ProMach, a global leader in packaging solutions, Matrix and Bartelt are dedicated to optimizing performance, protecting brands, and fostering trust across the packaging supply chain. Discover more about Matrix at www.MatrixPM.com and ProMach at www.ProMachBuilt.com.

2395 Dakota Dr.

Grafton, WI 53024

P: 262-268-8300

TOLL FREE: 888-Matrix1

E: Matrix@ProMachBuilt.com

MatrixPM.com

