



 **MATRIX**

ELETE
BAG-IN-BAG

F&T

**FLEXIBLES
& TRAYS**



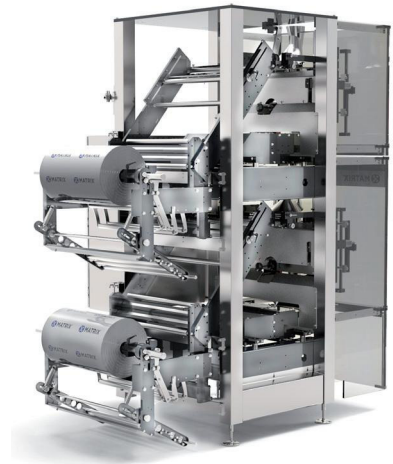
ELETE

BAG-IN-BAG

The Elete Bag-in-Bag Machine provides an Innovative Way to fill Single Serve and Multi-Serve Pillow Bags in an Overwrap or Master Bag

Pillow bags are created from roll-stock in the upper section of the Bag-in-Bag machine. As each bag is made, product is dispensed, and bag is sealed before continuing its journey by dropping down in to an overwrap or master bag.

Here a pillow bag, optional flat bottom or gusseted bag is created on the lower section of the machine, when the pre-determined number of bags are dropped, the final package is sealed, producing the final bag.



Unique and versatile, the Bag-in-Bag machine effectively produces entire package in one machine.

FEATURES & BENEFITS

- Made in the USA
- Automatic film tracking, registered film sensors and unwind film spindle
- Stainless steel frame, NEMA 4X electrical enclosure, adjustable mounting feet
- Allen Bradley MicroLogix PLC with 10.5" color touch screen
- Stepper motors for the film advance and jaw actuator for upper and lower sections
- Fully compatible with all types of fillers

OPTIONS

- Mechanical or heated hole punch
- Flat bottom and gusseted/tucker attachment
- Gas Flush
- Load shelf for heavier bags (several types available)
- UL electrical system
- Code Date or Label Machine
- Power unwind
- Sanitary

UPPER SECTION BAG STYLE



Pillow Bag

LOWER SECTION BAG STYLES



Pillow Bag



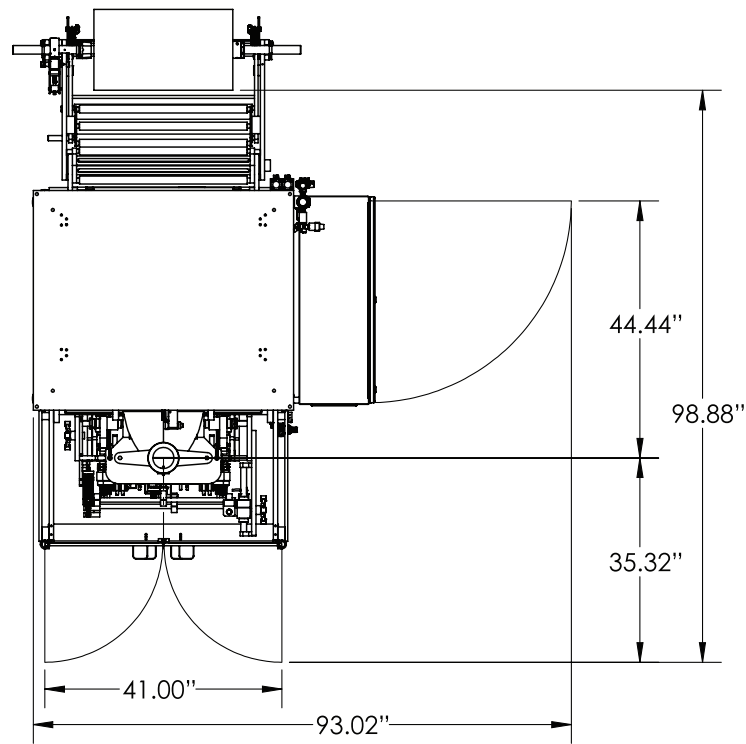
Gusset Bag



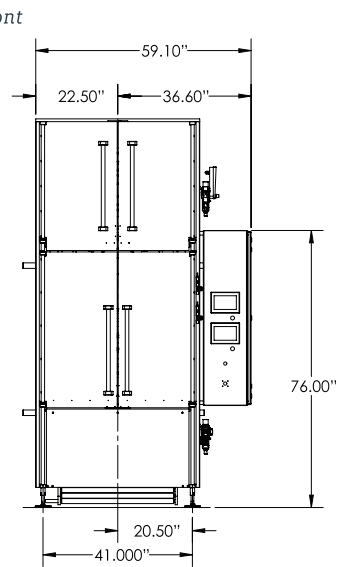
Flat Bottom Bag

CONFIGURATION

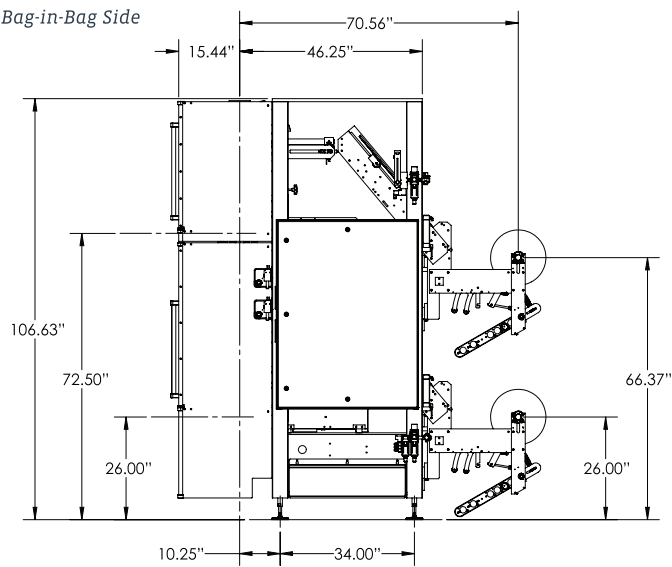
Bag-in-Bag Top



Bag-in-Bag Front



Bag-in-Bag Side



TYPICAL PRODUCT SPECIFICATIONS

| | | |
|---------------|---|--------------------|
| Cycle Speed | Up to 100 BPM (depending on application) | |
| Electrical | 208-240 VAC 30 AMP | |
| Air Pressure | 6-20 CFM @ 80 PSI (demand varies by application) | |
| Bag Sizes | Upper Primary Bag | Lower Overwrap Bag |
| Minimum width | 3" | 3" |
| Maximum width | 12" | 15" |

| | | |
|-----------------|---|--------------------|
| Bag Sizes | Upper Primary Bag | Lower Overwrap Bag |
| Maximum length | 12" | 15" |
| Film Roll (Std) | N/A | N/A |
| Film | Laminate, poly or paper film sealing capability | |
| Filler | Compatible with all types | |

We reserve the right to introduce technical modifications without notice.



Matrix is an industry leading manufacturer of rugged, cost competitive, and easy-to-operate vertical form fill & seal (VFFS) equipment for all types of flexible packaging and operates as a master distributor of FLtècnics rollstock pouch machines, INVpack stickpack and sachet machines, and Toyo Jidoki pre-made pouch packaging machines. Experienced in most flexible packaging applications, Matrix has the ability and knowledge to tailor highly efficient and sensible packaging systems and is committed to optimizing solutions for customers on a global scale. Matrix is a product brand of ProMach, a global leader in packaging line solutions. As part of the ProMach Flexibles & Trays business line, Matrix helps our packaging customers protect and grow the reputation and trust of their consumers. ProMach is performance, and the proof is in every package. Learn more about Matrix at www.MatrixPM.com and more about ProMach at www.ProMachBuilt.com.

650 N Dekora Woods Blvd.

Saukville, WI 53080

P: 262-268-8300

TOLL FREE: 888-Matrix1

E: Matrix@ProMachBuilt.com

MatrixPM.com